



# SP472 CITY ALL SEASON

New Drive Axle Municipal Tyre



## SP472 City All Season



### New Drive Axle, All Season Municipal Tyre

The new Dunlop SP472 City All Season tyre, developed to cope with the multiple requirements of today's urban transport operations. A variety of different vehicle types are used in urban operations (e.g. city buses, waste disposal trucks, cleaning machines), in addition, urban transport operations present a number of constraints for tyres e.g. frequent start/stops, kerb scuffing, low emissions (noise), various climatic conditions and partly aggressive road surfaces.

The SP472 City All Season tyre has been developed for drive axle use, in operations where excellent traction is required.

The robust, bladed tread pattern has been specifically developed to provide superb traction and braking on wet and snow covered roads, combined to high mileage, even wear and low noise.

The SP472 City tyres are designed for all season use and consequently M&S marked. Reinforced sidewalls do enhanced kerb scuffing resistance. The use of a dedicated, abrasion resistant tread compound in combination with the new tread pattern results in excellent traction, high mileage performance, even wear type and low noise generation.

Use of latest technology carcass materials combined to an improved contour geometry results in excellent durability. SP472 City tyres are regroovable and retreadable, to improve fleet efficiency.

With these features, the new SP472 City All Season tyres are an ideal drive axle fitment for trucks and buses operating in urban areas, providing premium performances and adding fleet efficiency through low cost per km throughout the year.

#### Features

- Wide, 5 rib tread pattern, specific abrasion resistant tread compound
- 3D-BIS blading technology
- Edge blading on outer grooves
- Reinforced sidewalls with wear indicators
- Robust carcass construction, regrooving indicators

#### Benefits

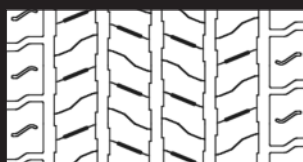
- High mileage
- Superb braking on wet and snow (M&S marked), good handling and stability
- Even wear pattern, low noise
- Good "scuffing" resistance
- Improved durability and damage resistance, regroovable and retreadable

#### Size line up and technical details

Size	Load Index Speed Symbol	Max. Single Axle Load (kgs)	Max. Dual Axle Load (kgs)	Inflation Pressure (bar)	Max. Overall Diameter (mm)	Max. Section Width (mm)	Static loaded Radius (mm)	Rolling Circumf. (mm)	Min. Dual Spacing (mm)	Recomm. Rim Width
275/70R22.5	148/145 J (152/148 E)	6300	11300	9.00	974	287	445	2920	303	7.50"

#### Regrooving information

New tyre tread



Regrooved



Regrooving depth: 3 mm  
Regrooving width: 6-8 mm

Regrooving must be done by professionals. Non-professional regrooving damages tyres and causes premature tyre removal.